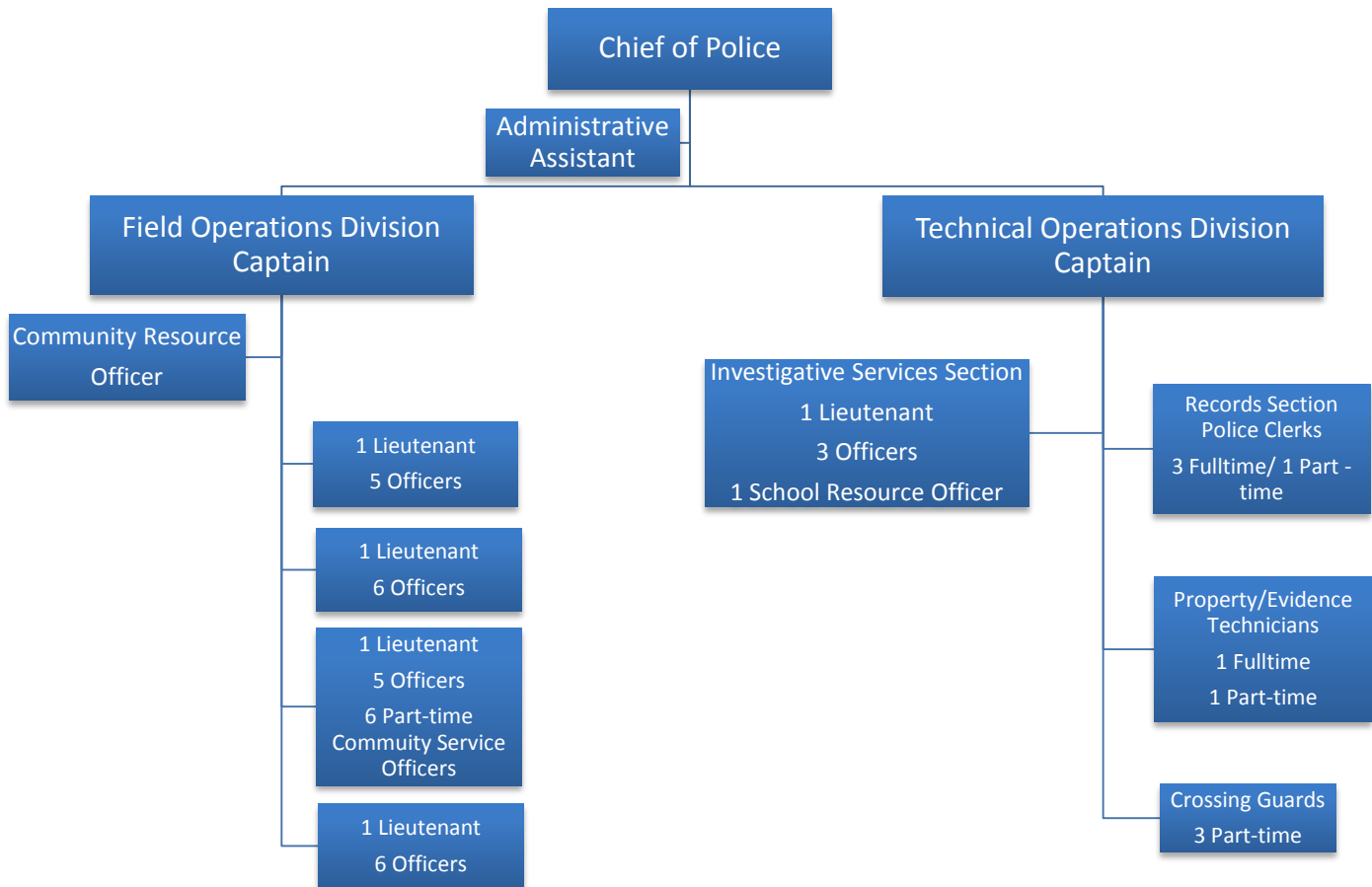


Grand Chute Police Department

ORGANIZATIONAL CHART



Staffing Total Authorized:
 35 FT Police
 1 Administrative Assistant
 3 FT Police Clerks
 1 PT Police Clerk = (.5 FTE)
 6 PT CSO = 3 FTE
 2 Civilian Evidence Technicians = 1.25 FTE
 3 PT Crossing Guards – 1.25 FTE